

# Welcome to Wheeler House

Completed in the Fall of 2009, the Wheeler House is Oglebay's newest sleeping facility. This private estate house overlooks the Palmer Course and features the finest in overnight accommodations.

## Conference & Living Areas

The living space has two primary areas: a cozy small living room at the far end of the house and the great room at the entrance. The small living room is perfect for reading or socializing with a leather sofa and two matching chairs with ottomans. The great room is the heart and center of the home consisting of the kitchen, dining and living room in an open floor plan. The dining area has a 10 ft. antique-style table with seating for 10 to 12 guests and the living room area is centered around the fireplace, vaulted ceiling and 2 leather sofas set in an L-shape facing a 50" LCD wall mounted TV.

## Sleeping Quarters

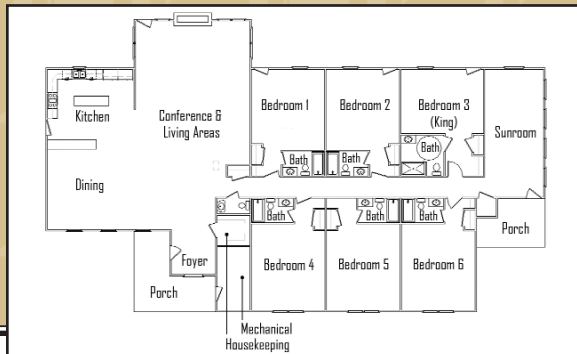
The Wheeler House has 6 bedrooms; 5 bedrooms with 2 queen beds and 1 king bedroom. Each bedroom has a 30" LCD wall mount TV and private bath. The king bath is a shower-only, wheelchair accessible bathroom. All bedrooms feature a beautiful decor of neutral colors and rich woods.

## Kitchen Facilities

The kitchen features granite counter tops and stainless steel appliances including a 5-burner double oven, 2 dishwashers, 2 refrigerators and a microwave. This large kitchen has an island and work area with two barstool areas, perfect for entertaining.

## Special Amenities

- Historical photos of Oglebay
- Private, semi-secluded location with a view of the Palmer course and countryside
- Private patio and grill
- Central air
- Propane grill and cookout accessories
- 4,550 sq. ft total



  
**Oglebay**

Oglebay Resort & Conference Center  
Wheeling, West Virginia  
800-624-6988 • [www.oglebay-resort.com](http://www.oglebay-resort.com)